

Terminal Aware



A cutting edge interactive
environment for visualizing real-time
situational data



Available on the
App Store

[Download the Demo](#)

Terminal Aware is a cutting edge solution that brings airport situational awareness to a new level. Up-to-date airport operations data is displayed on mobile devices in real-time. It provides new visualization awareness via 3D Graphics, and true real-time mobility via Wi-fi and 3G (optimized for low bandwidth connections).

Terminal Aware is based on CTI's proven mobile technologies currently in use by major international airlines.



- Smart Phones
- Tablets
- Large-screen TV Displays

- Desktop PC
- Video Wall
- Hybrid Laptops

- 3G / 4G
- Wi-fi
- Company Intranet

- Windows
- Apple iOS
- Android

Mobile Awareness

Terminal Aware empowers staff to be in touch at all times and locations when carrying out their duties, and transforms the workplace from being desk/PC bound to full mobility.

Terminal Aware enables truly mobile access to real-time data throughout the organization, whether that be normal desktops, or areas traditionally not suited to a desktop environment. This includes full access to real-time data while traveling, allowing the dissemination of information to all operations staff.

Terminal Aware supports the full range of mobile and static devices (Mobile Phones, Tablets plus Large Screen TVs and Projectors) to make it easy to share information in meetings. Large-screen mode can also be used non-interactively in staff spaces, displaying alerts to highlight problems.



Fig.4 Detailed activity for port

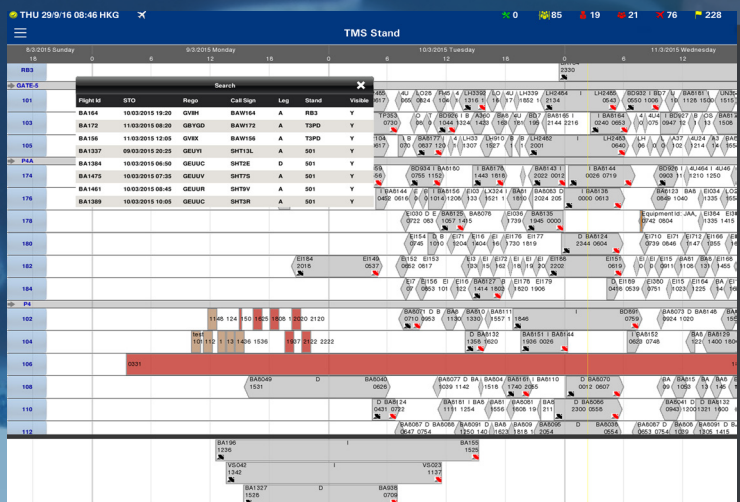


Fig 5. Stand allocation gantt



Fig 6. Airport view

Open GL 3D Graphical Environment

Terminal Aware uses a state of the art interactive touch based interface. The user is fully immersed in a 3D global view. There is full support for gesture based devices, such as tablets and large high resolution table top computers.

FIDS

The FIDS (Flight Information Display System) View presents real-time schedule data in a classic tabular format. This view may be configured to display varying amounts of data such as gate, status and passenger load. The user may also enter search information to quickly filter and find a flight.

Terminal Aware's large format flight information card is designed to display flight information for a single flight in clear easy to read text that can be shown to passengers that may be poor of sight.

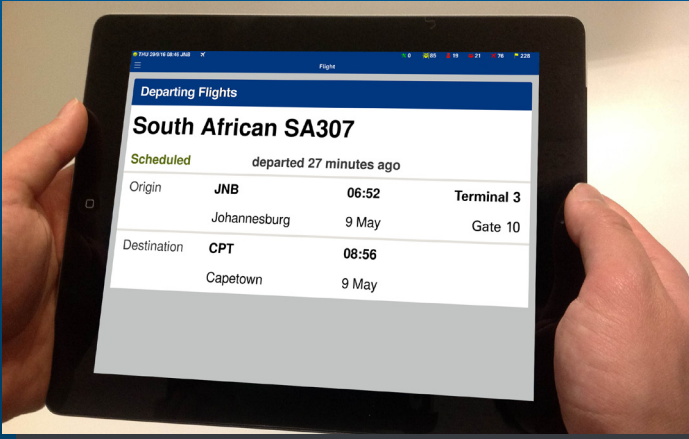


Fig.7 Flight Info Display System - Single Flight

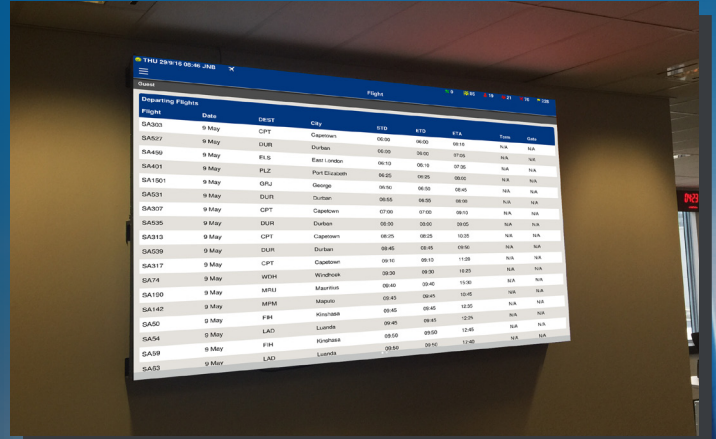


Fig.8 Flight Information Display System View

Features

- Operational View: Real-time presentation of airport assets and associated operational data.
- Executive Management View: Real-time KPI Rendering e.g. Resource Utilisation.
- Traditional Gantt Based Resource Allocation Views: Stand, Gate, Baggage, Check-In, Vehicle.
- Detailed filtering and advanced search capabilities.
- Passenger Connection View
- Landing Sequence View
- General Information View: Display and rotate globe to show arrival flight location and status in a passive non-interactive mode.
- Graphical Airport Layout Views showing operational situation with time scrolling and status reporting.